

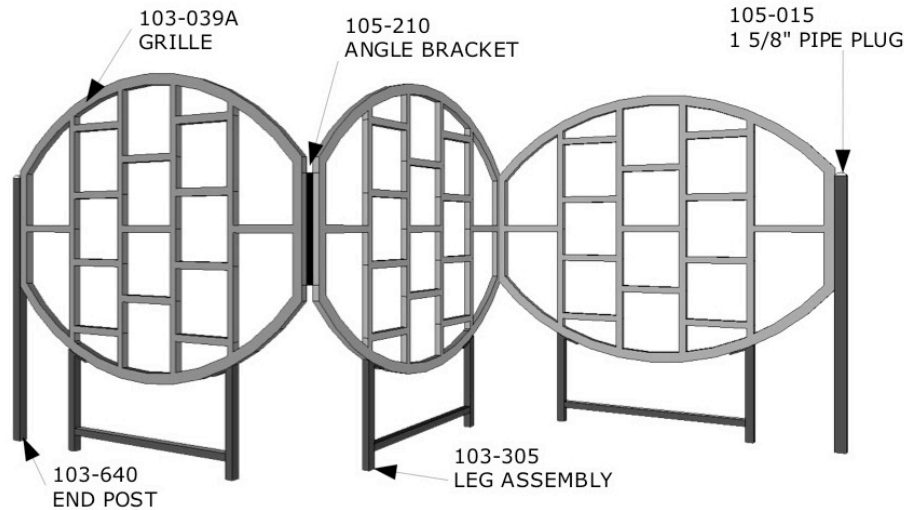
# 101-101 WING DING

## IMPORTANT

PLEASE READ THESE INSTRUCTIONS BEFORE COMMENCING ASSEMBLY. All equipment must be installed in accordance with these instructions. Check your shipment against Bill of Lading and Parts list. Any missing or broken parts must be reported to your distributor within 10 days of receipt of your order. When properly installed and maintained, equipment will give many years of Safe, Trouble-Free use. Periodically check for loose or broken parts. Loose bolts must be tightened and broken parts must be replaced as they can possibly create dangerous situations leading to unnecessary accidents. Resilient Surfacing should be used under all playground equipment. Retain a copy of these instructions for maintenance and replacement part purposes

Appropriate publications, available at no charge, from the Consumer Product Safety Commission, include "A Handbook for Public Playground Safety". You can receive your free copy by calling 1-301-504-7908 or at [www.cpsc.gov](http://www.cpsc.gov). You can get a copy of the ASTM standards for Play Equipment and Safety surfacing at [www.astm.org](http://www.astm.org)

**Safety Surfacing - Use of safety surfacing in compliance with ASTM specification F1292 is required. Contact your surfacing supplier for required surfacing depth for this equipment.**



<u>PACKING LIST</u>				<u>HARDWARE BAG</u>			
1	CTN	1	HARDWARE BAG	2	105-510	ANGLE BRACKET	
		1	103-039A GRILLE	2	105-015	1 5/8" ALUM. PIPE PLUG	
1	CTN	2	103-039A GRILLE	4	116-545	5/16" X 2 1/2" BUTTON HD. BOLT	
1	BDL	3	103-305 LEG ASSEMBLY	14	116-530	5/16" x 1" BUTTON HD. BOLT	
1	BDL	2	103-640 END POST	14	316-501	3/8" FLAT WASHER	
				18	326-501	5/16" LOCK WASHER	
				14	316-501	3/8" FLAT WASHER	
				18	216-512	5/16" BUTTON HD. NUT	
				2	416-350	3/16" SOCKET KEY	
				1	805-532	WARNING LABEL	
				1	805-534	MFG LABEL	
				1		MAINTENANCE CHECKLIST	

2 CTN      2 BDL      4 TOTAL PCS      Weight 140#      Class 70

# 101-101 WING DING

Page 2  
Rev. 05/27/2010

## DETAILS

<i>Equipment Dimension</i>	10'3"L x 55"H X 4'8"D	
<i>Use Zone</i>	22' X 17'	
<i>User Age</i>	2-12	
<i>Number of Users</i>	10	
<i>Minimum Recommended Number of People for Installation</i>	2	
<i>Installation Time/Total Man Hours</i>	3/6	Does not include concrete cure time

## MATERIAL SPECIFICATIONS

<i>END POST</i>	1 5/8" O.D. 14ga Flo-Coat galvanized tube	<i>Hardware</i>	Stainless Steel
<i>Grille</i>	Permanent mold cast using #319 aluminum alloy	<i>Coating</i>	Thermoplastic coating
<i>PAINT</i>	All steel components have an Electrostatically applied, oven cured polyester powder coating finish	<i>LEG ASSEMBLY</i>	1" O.D. 15ga Flo-Coat galvanized tube

**GENERAL FOOTING RECOMMENDATIONS**

Diameter and depth of footings illustrated are satisfactory in most applications for pipe sizes up to 2 3/8" diameter. Varying soil & climatic conditions may require deeper and heavier footings in some areas. Check local building codes.

Diagram:  
Permanent Installation

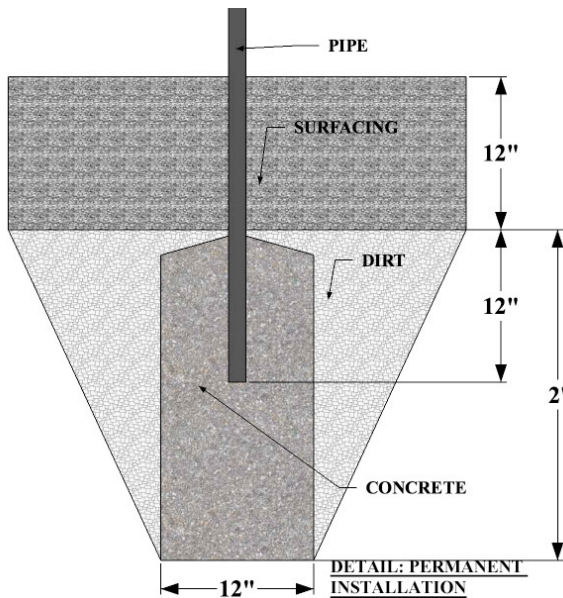
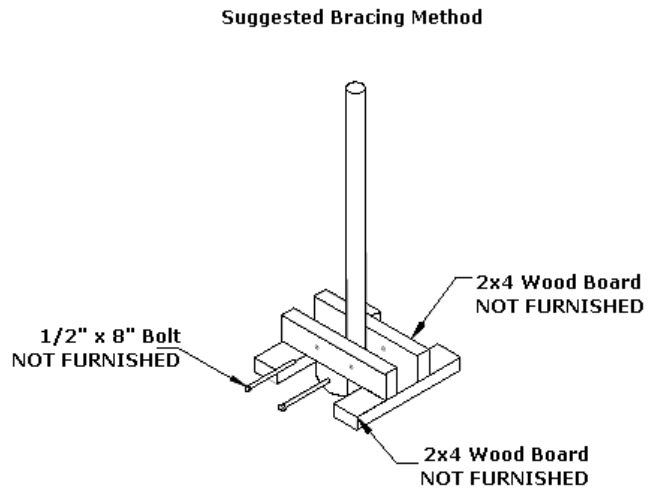


Diagram:  
Suggested Bracing Method

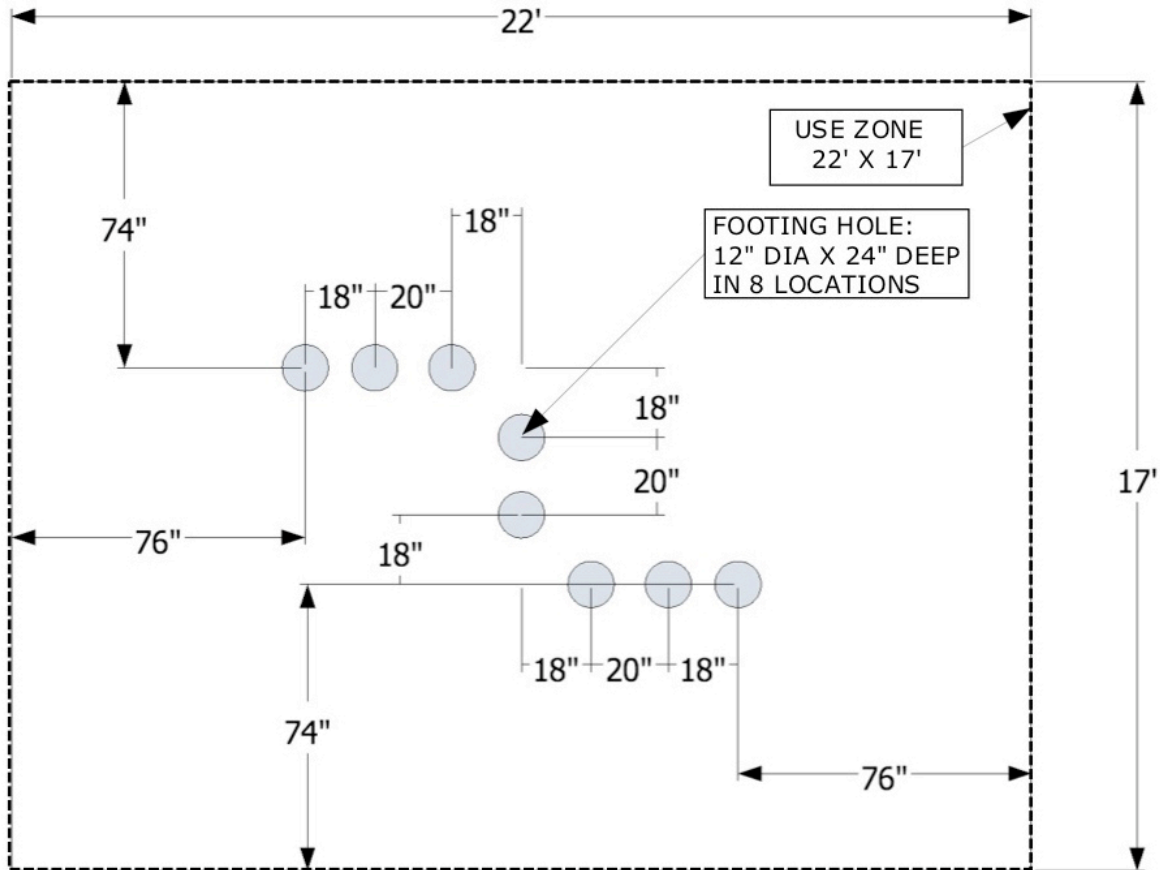


**Footing**

Total footing depth is 36" including the surfacing (of that 36" only 24" of anchor will be put in footing hole. The remaining 12" will be nothing but concrete). SportsPlay Equipment manufactures all equipment to include 12" of safety surfacing. If using 12" of surfacing will need to dig your hole 24" deep. If using less than 12" of surfacing your footing depth will need to be deeper (6" of surfacing you would need to dig your hole 30" deep).

# 101-101 WING DING

## USE AREA AND FOOTING LAYOUT:



## GENERAL USE/FALL ZONE RECOMMENDATIONS:

The fall zone extends 6' in all directions.

## GENERAL MAINTENANCE INSTRUCTIONS:

Check MONTHLY for loose bolts, damaged or broken parts. Tighten and/or replace immediately. Replace any parts that show a reduction of 25% from the original size. Inspect all labels for damage and replace if necessary. Contact your distributor and reference the part numbers on this instruction set for replacement parts.

Inspect coating for damage. Contact your distributor for a Thermoplastic touch up kit if necessary.

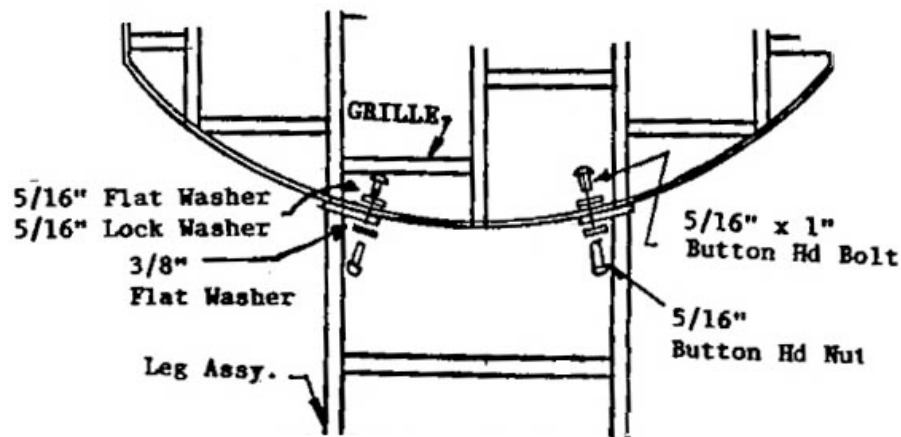
## 101-101 WING DING

Page 5  
Rev. 05/27/2010

### ASSEMBLY AND INSTALLATION:

**NOTE:** All threaded ends of bolts protruding beyond nuts must be cut off and/or peened to eliminate sharp edges. No more than two threads should extend beyond face of nut. All washers, "T" nuts and other fastener hardware used on round pipe or tubing must be hammered down to conform to the curved underlying surface to eliminate catch points. DO NOT tighten nuts more than hand-tight until entire assembly is completed.

- STEP 1** Mark footing holes per layout drawing on page 4. Dig the holes per the footing drawing on page 3. (8 holes 2' deep)
- STEP 2** Attach the Grille to the leg assembly by inserting a 5/16" x 1" bolt through a 5/16" lock washer, 5/16" Flat Washer and through the Grille and ladder assembly. Secure using a 5/16" nut and 3/8" Flat Washer.



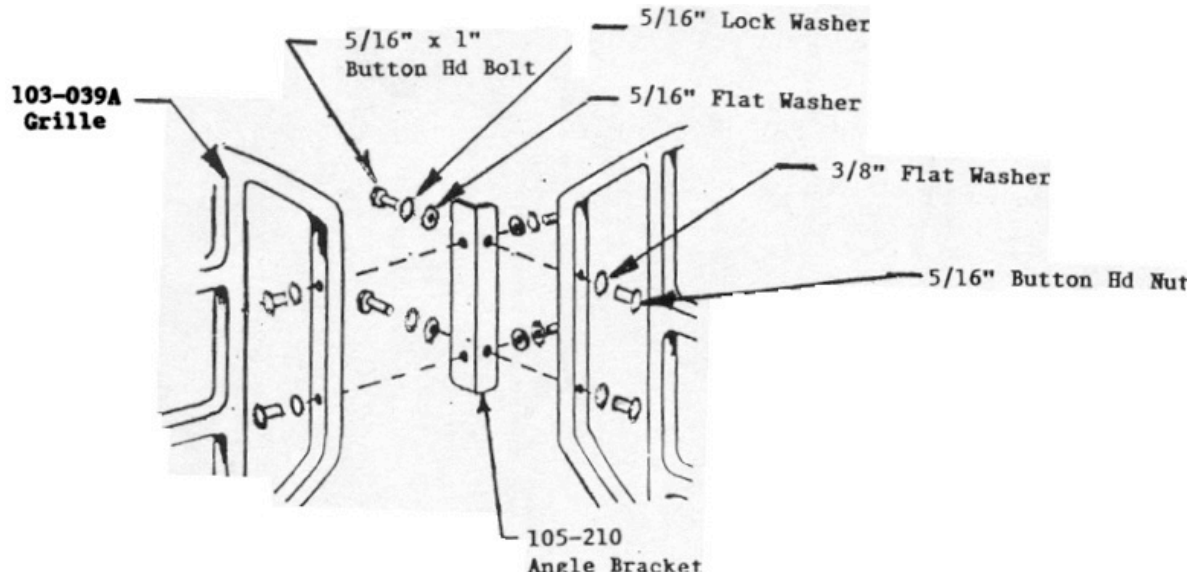
## 101-101 WING DING

Page 6

Rev. 05/27/2010

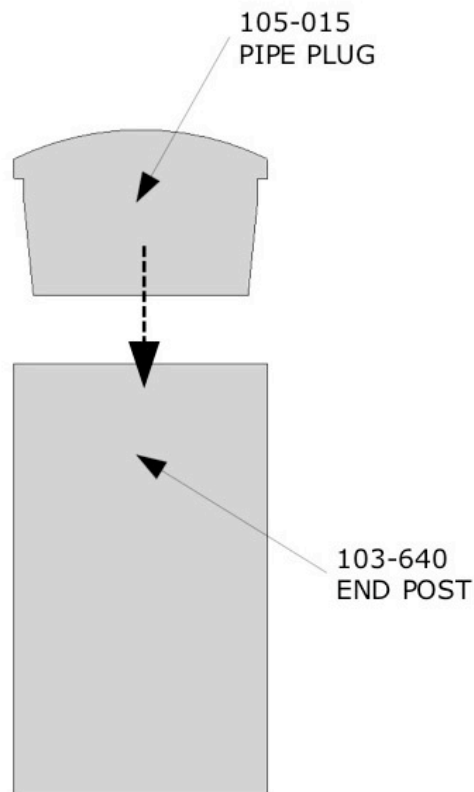
### STEP 3

Attach the 105-210 Angle bracket to the Grilles by inserting a 5/16 x 1" Bolt through a 5/16" Lock Washer, 5/16" Flat Washer then through the bracket and into the Grille. Secure it with a 3/8" Flat Washer and a 5/16" Nut.



### Step 4

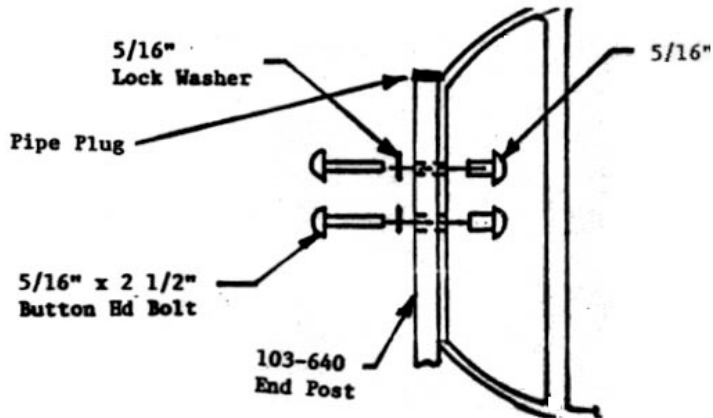
Drive Aluminum Pipe Plugs (105-015) into End Posts. File off any metal shavings that result from wedging plugs into posts. Brace end posts into footing holes (see recommended bracing method on page 3).



## 101-101 WING DING

Page 7  
Rev. 05/27/2010

- Step 5** Attach Grilles to end post by inserting a 5/16 x 2 1/2" bolt through a 5/16" Lock Washer and through the 103-640 End Post then through the Grille and secure it with a 5/16" Button Head nut.



- Step 6** Plumb & Level. Tighten all nuts and bolts so that all lock washers are flat. Mix concrete per manufacturers instructions and fill holes per the footing cutaway drawing on page 3. Allow concrete to cure per manufacturers requirements.
- Step 7** Attach Warning Label and Manufacturers Identification Label in a location where they are clearly visible and legible and away from normal hand and foot placement areas. The labels must be replaced if they become illegible, destroyed or removed. Contact your distributor for replacements.